



DISNEY TIMELINE

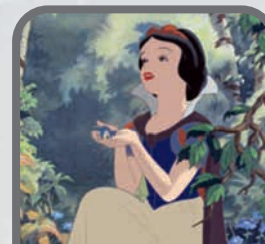
1923

October 16 – Walt and his brother Roy sign a contract with M.J. Winkler to produce a series of *Alice Comedies*, officially founding The Disney Brothers Cartoon Studio, now The Walt Disney Company.



1932

November 18 – The Company wins its first competitive Oscar, for the *Silly Symphony* short *Flowers and Trees*, as well as a special award to Walt Disney for the creation of Mickey Mouse.



1952

December 16 – Walt Disney founds WED Enterprises, now known as Walt Disney Imagineering.



1964

April 22 – Four groundbreaking Disney attractions open at the New York World's Fair, including "it's a small world."

1901

December 5 – Walter Elias Disney is born in Chicago, Illinois.



1928

November 18 – *Steamboat Willie* debuts at the Colony Theatre in New York, introducing Mickey Mouse and Minnie Mouse to the world.



1937

December 21 – *Snow White and the Seven Dwarfs* premieres at the Carthay Circle Theatre in Los Angeles.

1955

July 17 – Disneyland opens to the world.

1966

December 15 – The passing of Walt Disney.

1995

July 31 – Disney announces its acquisition of Capital Cities/ABC.



1992

April 12 – Euro Disneyland, now Disneyland Paris, opens in Marne-la-Vallée, France.

1989

May 1 – Disney-MGM Studios Theme Park, now Disney's Hollywood Studios, debuts at Walt Disney World Resort.



1982

October 1 – EPCOT Center becomes the second theme park at Walt Disney World Resort.

1994

April 18 – *Beauty and the Beast* opens on Broadway, the first show from Disney Theatrical Productions.



1991

May 6 – The Walt Disney Company joins the Dow Jones Industrial Average.

1983

April 15 – Tokyo Disneyland opens, the first Disney theme park outside the United States.



1971

October 1 – Walt Disney World Resort opens with Magic Kingdom Park, two resort hotels, and more.

1998

April 22 – Disney's Animal Kingdom Theme Park roars to life at Walt Disney World Resort. July 30 – *The Disney Magic* cruise ship sets sail from Port Canaveral, Florida, on its maiden voyage.

2006

May 5 – Disney acquires Pixar Animation Studios.



2012

October 30 – Disney announces its agreement to purchase Lucasfilm Ltd.



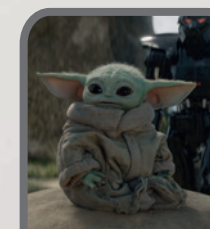
1991

May 6 – The Walt Disney Company joins the Dow Jones Industrial Average.



2017

December 14 – Disney announces the acquisition of most of the assets of 21st Century Fox, including the storied 20th Century Fox film studio.



2019

November 22 – *Frozen 2* is released, becoming the top-grossing animated feature of all time.

2005

September 12 – Hong Kong Disneyland opens its gates.

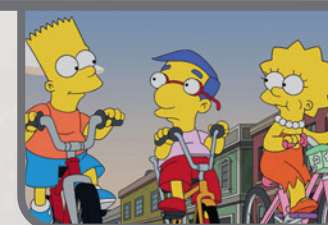


2009

August 31 – TWDC announces a deal to acquire Marvel Entertainment.

2016

June 16 – Shanghai Disney Resort opens in China.



2019

November 12 – Disney+ launches, with 10 million subscribers on its first day of operation.

